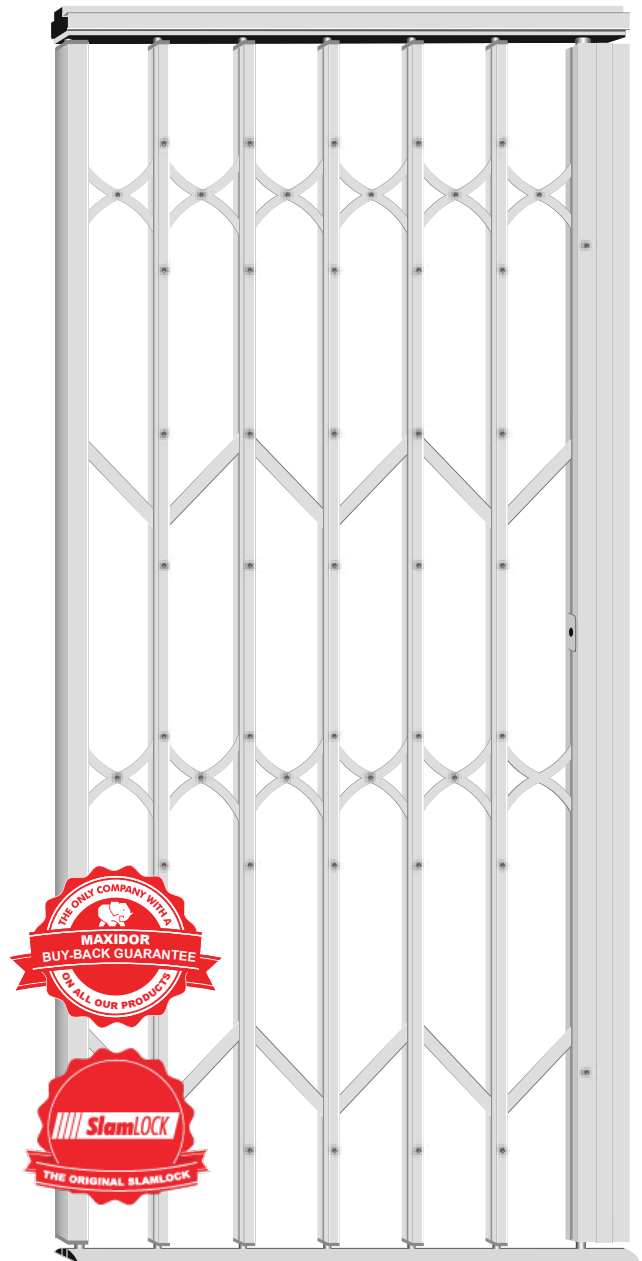
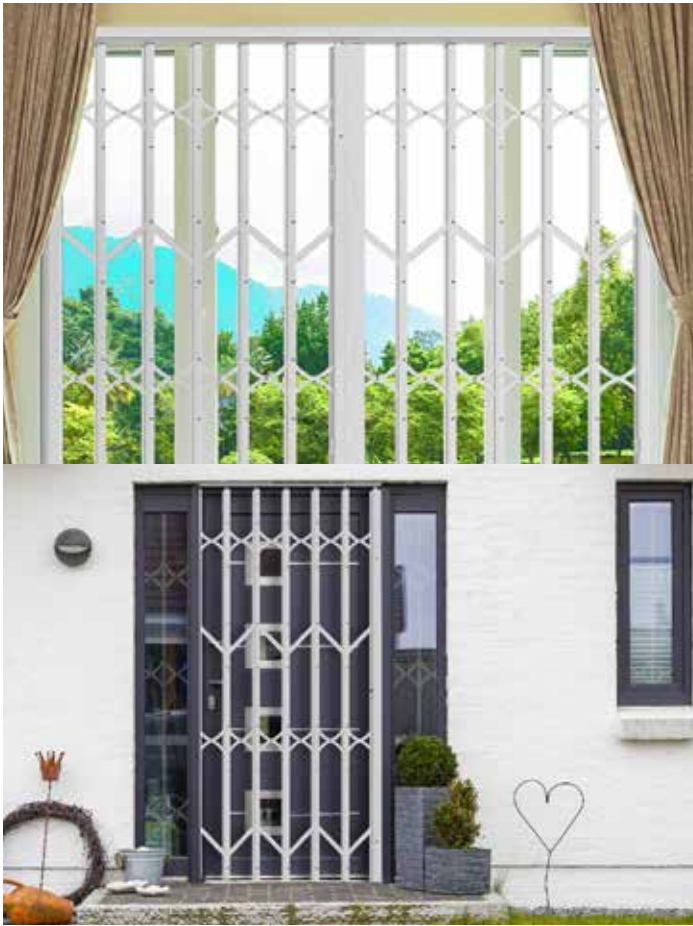


Click Here To Get A Free Assessment & Quote

Max-Classic Expandable Security Gates



- ✓ Express Delivery
- ✓ Buy Back Product Guarantee
- ✓ Ultra-modern security gate design
- ✓ 1 x Standard Slamlocks
- ✓ Aluminium Top & Bottom Tracks - anti-trip design



Nylon Components

- High grade nylon components between all metal-on-metal parts
- Prevents corrosion, protects paint finish and ensures product longevity



Strong Flights

- Extra thick steel brace unique to Maxidor
- Difficult to cut through using common tools
- Buys valuable time in the event of an attack



Slamlock

- Independent lock that will slam closed without the use of a key for an instant security gate barrier
- SABS tested to withstand a pull force up to 2.6 Tonnes
- Unique lock channel cover prevents prying tools



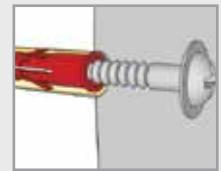
Double Upright Design

- Square tubes used in double upright design for strength
- Our double upright design puts 13.6 mm of steel between you and a possible threat



T.G.I.C Grade Powder Coating

- UV stabilised TGIC grade for even finish that will not fade or yellow in the sun
- Available in two standard colours: White and bronze
- Can be made to match any colour on request (please ask for a "special colour price")



Chemical Fastening

- Chemical-fastener is used to form a permanent bond between fixing material and wall
- This prevents the barrier from being ripped out of the wall

www.maxidor.co.za | 0860 131 131